

EXPO CHICAGO 2016

Carrie Secrist Gallery
BOOTH 406

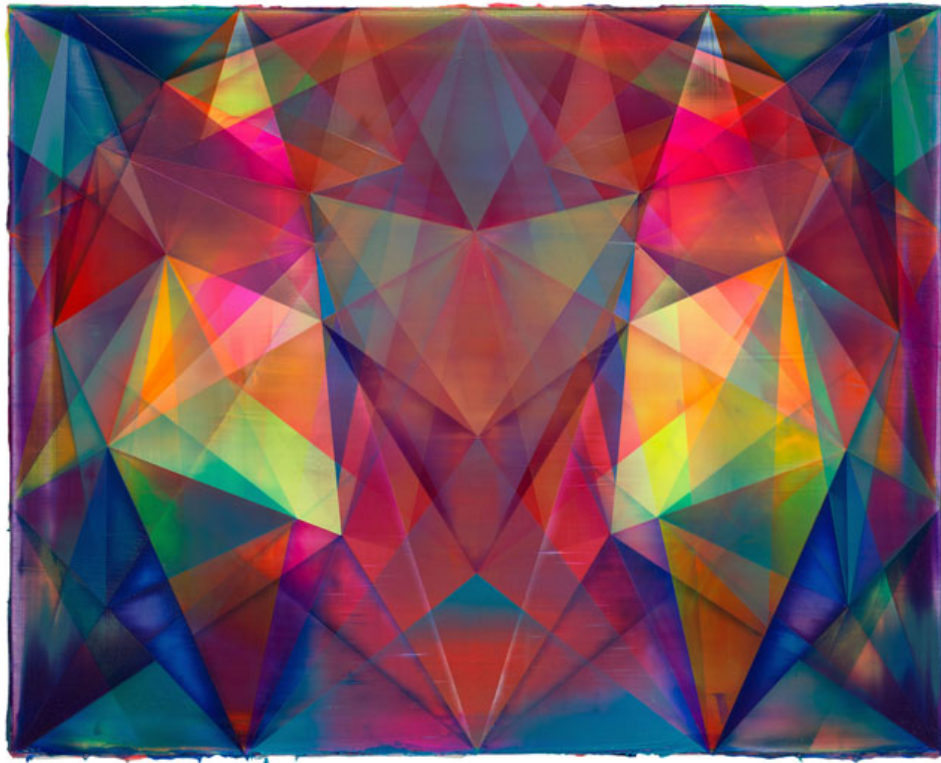
Featuring:
Shannon Finley
Anne Lindberg
Andrew Holmquist



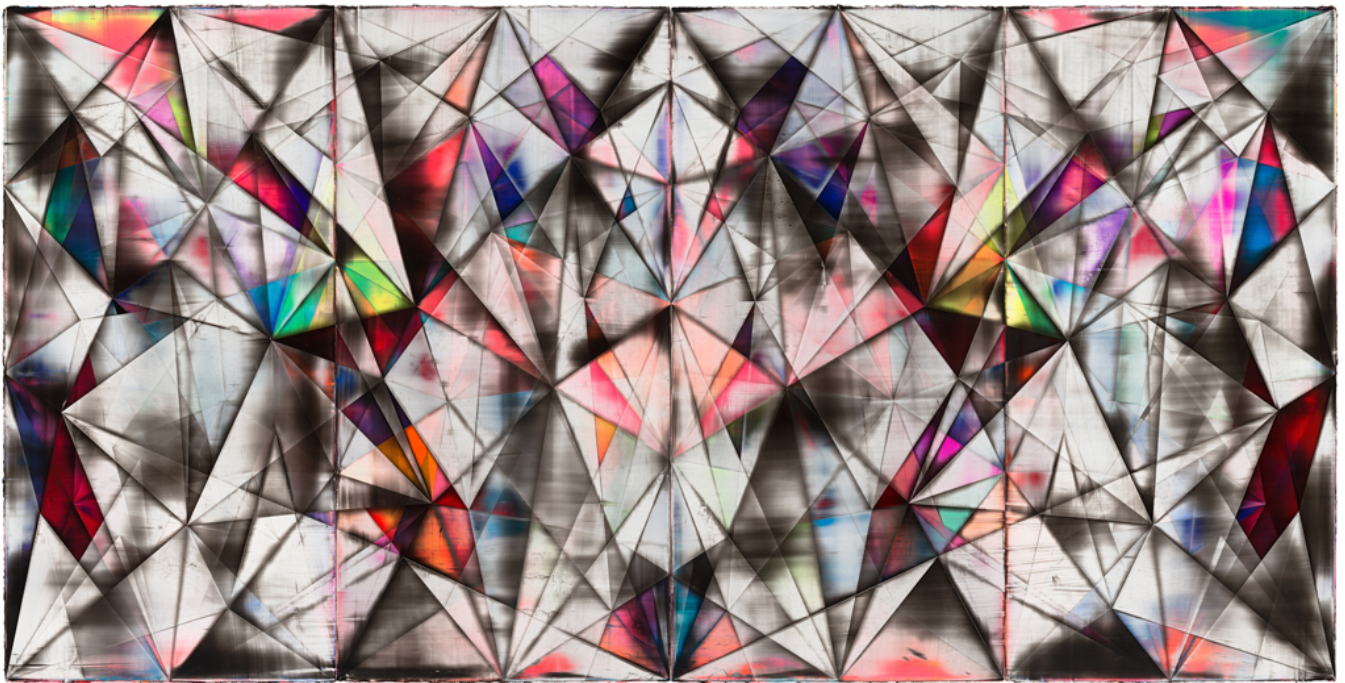
Shannon Finley
Edge of Darkness, 2016
Acrylic on linen
94 3/8 x 78 5/8 inches
#3411



Shannon Finley
Gateway, 2016
Acrylic on linen
31 3/8 x 23 1/2 inches
#3400



Shannon Finley
HUD, 2016
Acrylic on linen
31 3/8 x 39 1/4 inches
#3402



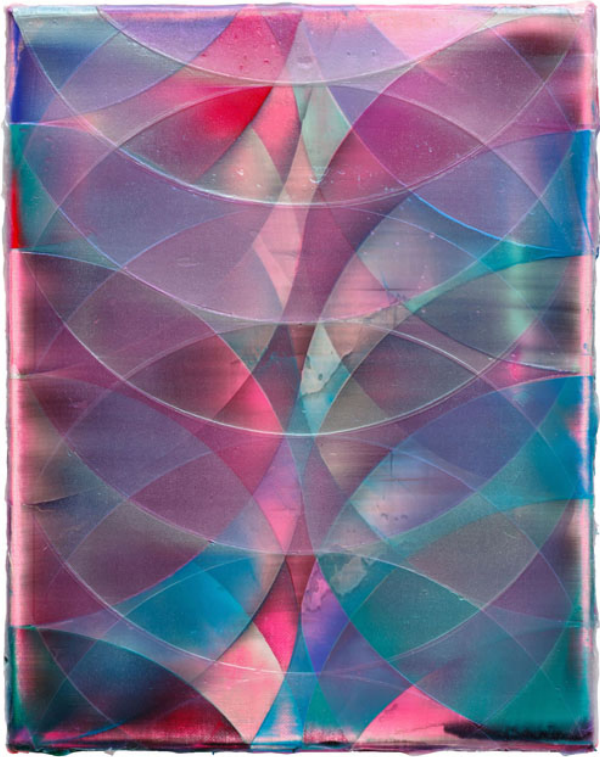
Shannon Finley
Googol, 2015
Acrylic on linen
95 x 189 inches (4 panels)
#3412



Shannon Finley
Potion, 2016
Acrylic on linen
15 x 11 3/4 inches
#3401



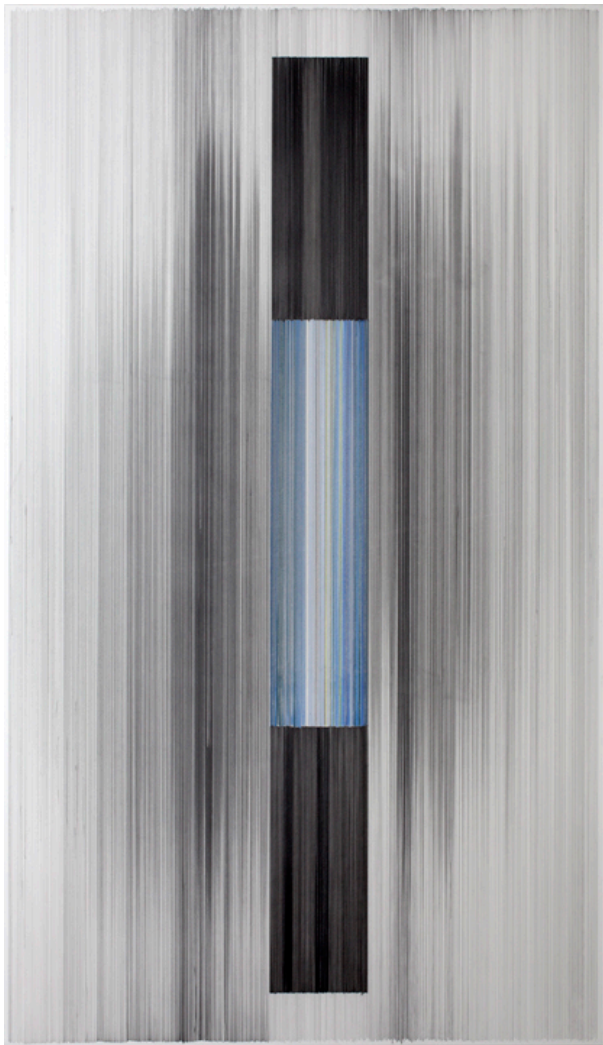
Shannon Finley
Twilight, 2016
Acrylic on linen
15 x 11 3/4 inches
#3399



Shannon Finley
Drift, 2016
Acrylic on linen
15 x 11 3/4 inches
#3398



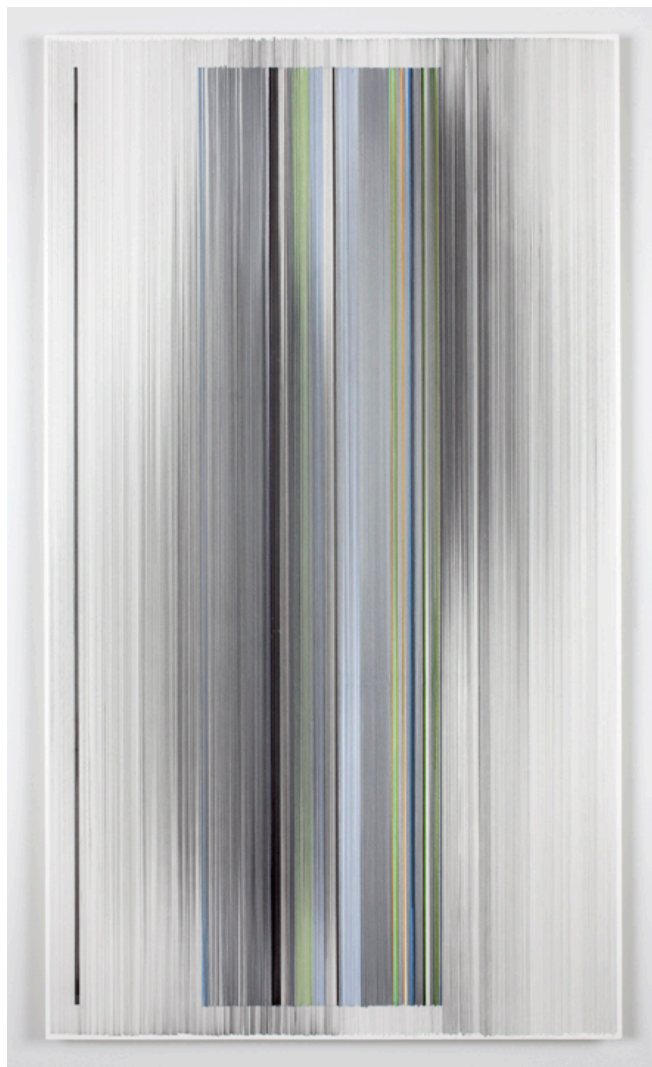
Shannon Finley
Delta, 2016
Acrylic on linen
15 x 11 3/4 inches
#3397



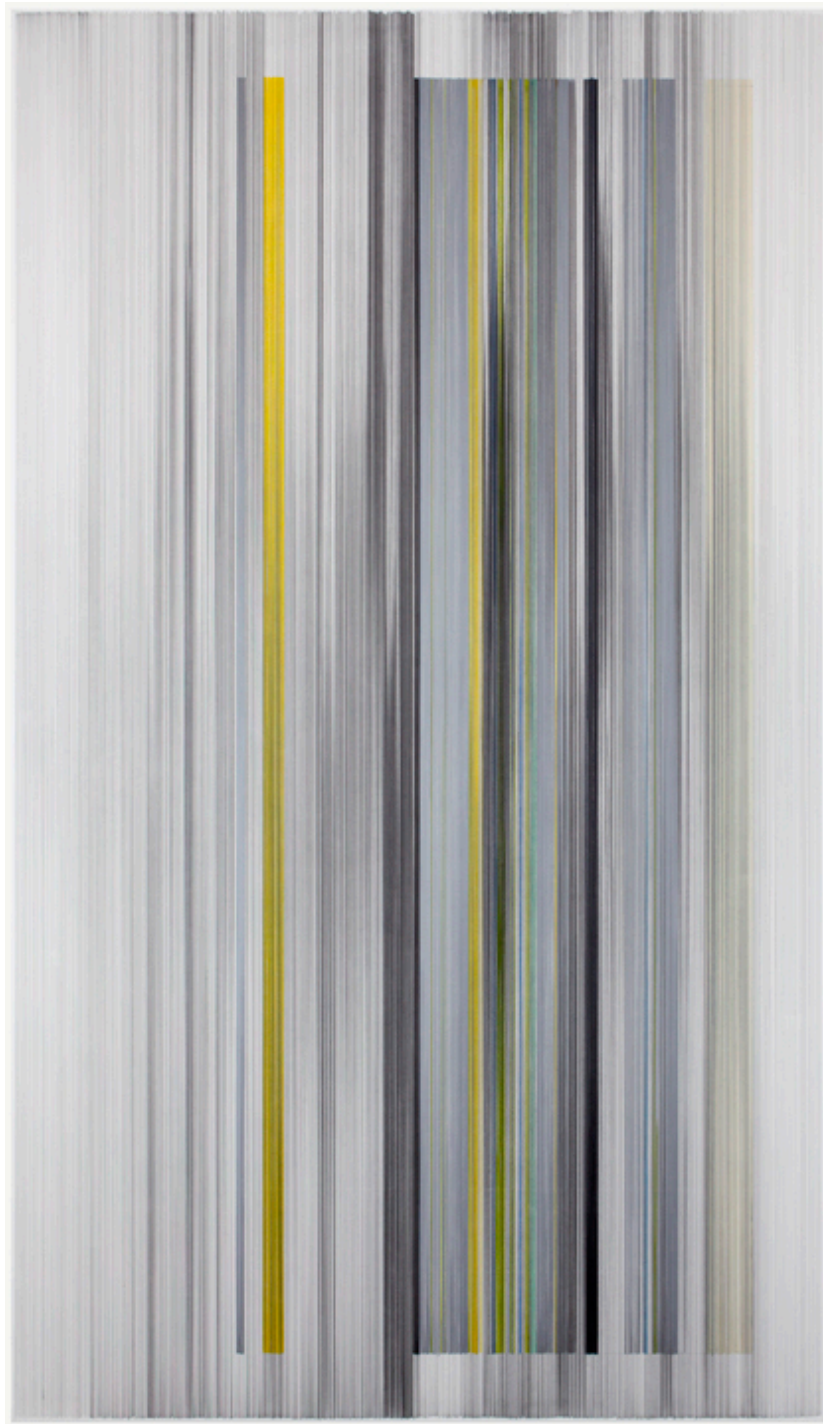
Anne Lindberg
window drawing 10, 2016
Graphite pencil and colored pencil on paper
34 x 59 inches
#3416



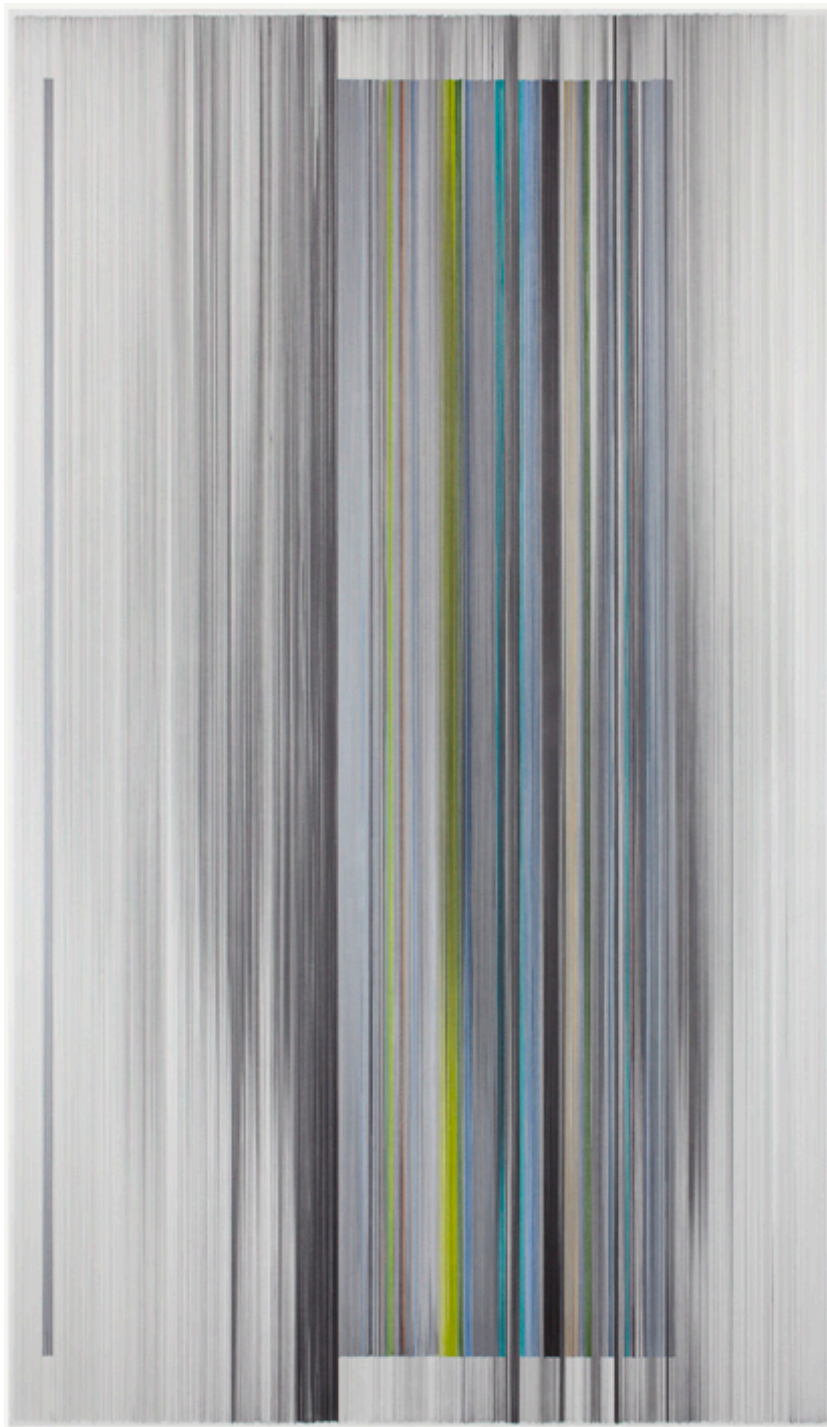
Anne Lindberg
window drawing 9, 2016
Graphite pencil and colored pencil on paper
34 x 59 inches
#3415



Anne Lindberg
unfold 24, 2016
Graphite pencil and colored pencil on paper
34 x 59 inches
#3413



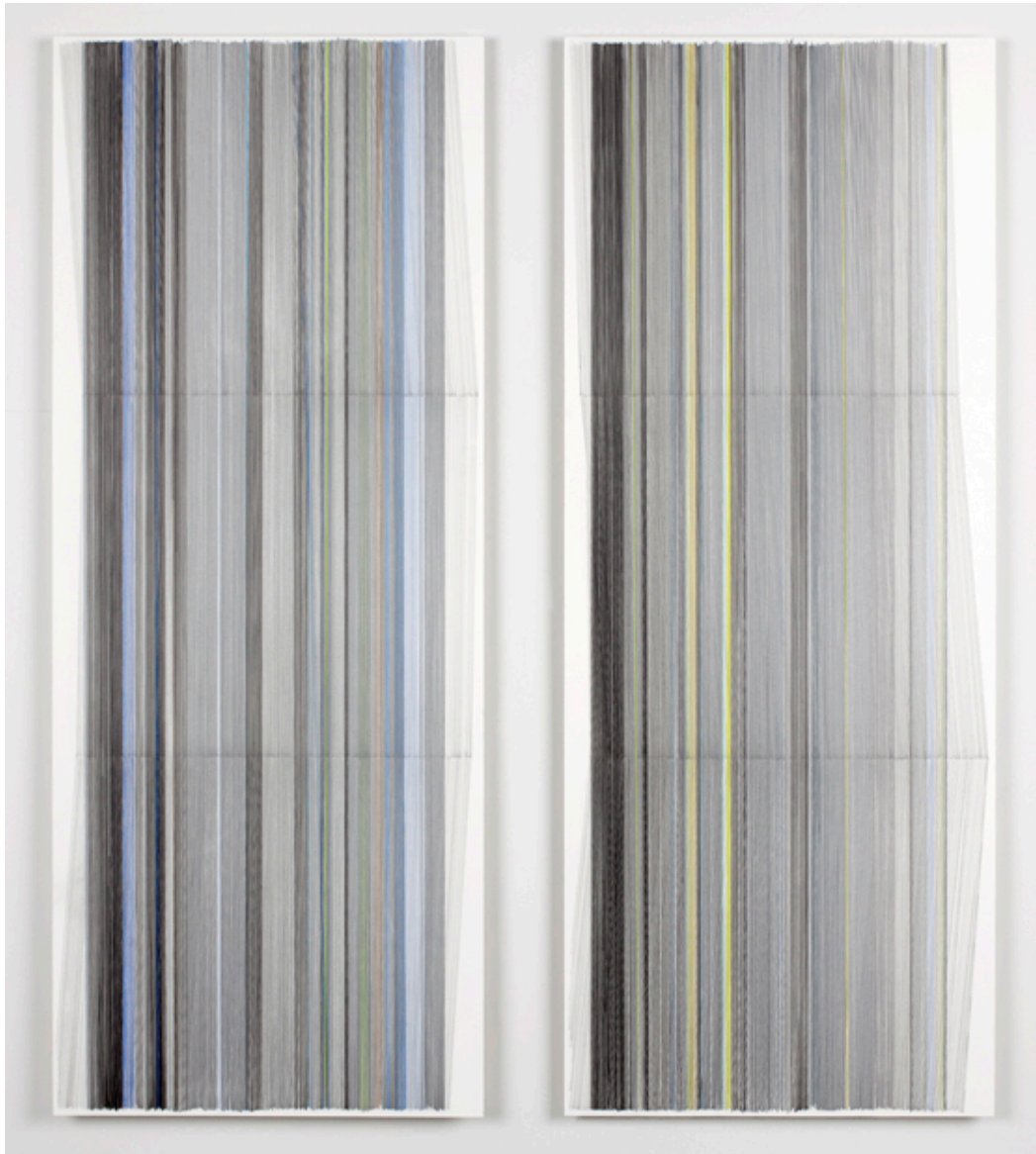
Anne Lindberg
unfold 22, 2016
Graphite pencil and colored pencil on paper
102 x 59 inches
#3389



Anne Lindberg
unfold 21, 2016
Graphite pencil and colored pencil on paper
102 x 59 inches
#3388



Anne Lindberg
unfold 23a & unfold 23b, 2016
Graphite pencil and colored pencil on paper
25 x 50 inches each (2 panels)
#3390



Anne Lindberg
unfold 25a & unfold 23b, 2016
Graphite pencil and colored pencil on paper
24 by 60 inches each (2 panels)
#3414

Andrew Holmquist
Strong LQQks 17, 2016
 Colored pencil, gouache, graphite wash, ink, tape
 and color film on paper
 24 x 19 inches (30 x 24 inches, framed)
 #3356



Andrew Holmquist
Strong LQQks 18, 2016
 Colored pencil, gouache, graphite wash, ink, tape
 and color film on paper
 24 x 19 inches (30 x 24 inches, framed)
 #3357



Andrew Holmquist
Strong LQQks 15, 2016
 Colored pencil, gouache, graphite wash, ink, tape
 and color film on paper
 24 x 19 inches (30 x 24 inches, framed)
 #3351





Andrew Holmquist
Presto Chango, 2016
Oil and acrylic on canvas
60 x 50 inches (35.5 x 28 inches, framed)
#3417

Andrew Holmquist
Strong LQQks 19, 2016
 Colored pencil, spray paint, gouache, oil paint and
 color film on paper
 30 x 22 inches (35.5 x 28 inches, framed)
 #3358



Andrew Holmquist
Strong LQQks 21, 2016
 Screen print, mono print, oil and acrylic paint on paper
 30 x 22 inches (35.5 x 28 inches, framed)
 #3359



Andrew Holmquist
Strong LQQks 20, 2016
 Colored pencil, gouache, tape and colored film on
 paper
 30 x 22 inches (35.5 x 28 inches, framed)
 #3360



SHANNON FINLEY

Shannon Finley's new body of artwork represents an extension of his ongoing investigation of the inherent romanticism that lurks – often hidden – within the realm of science and technology. Utilizing abstract painting as a means of executing this investigation, a combination of geometric forms that include orbs, rhombi and waves form a dialectic that is equal parts analytical and alchemical. The paintings themselves are built with layers upon layers of medium and color that form a surface that is ripe for interpretation. The results are prismatic 2-dimensional structures that appear to distribute light through an interlocking combination of color and form.

Finley (b. 1974, Ontario, Canada) lives and works in Berlin, Germany. He received his BFA from Cooper Union in New York and also studied at the Nova Scotia College of Art and Design in Halifax, Canada. Selected exhibitions include Yokohama Museum of Art, (Japan), the Museum of Concrete Art (Germany), Neuer Aachener Kunstverein (Germany), the KW Institute for Contemporary Art in Berlin, Kunsthalle Athena (Greece) and the Prague Biennale.

ANDREW HOLMQUIST

Andrew Holmquist makes illusionistic paintings formed with copious ribbons of paint situated within a layered physical space. In the artist's ongoing exploration of dimension and abstraction, ambiguous representations collapse into material investigations. His large-scale gestural brushstrokes explore personal identity through a sunlit palette reminiscent of summer days spent poolside. New investigations into collage translate process and technique to the third dimension, emphasizing the importance of geometry, structure, and material to Holmquist's practice.

Holmquist (b. 1985, United States) lives and works in Berlin, Germany. His exhibition history includes three solo presentations with the Carrie Secrist Gallery. A catalogue was produced by the gallery for his most recent exhibition this past January, *Stage Left*. The gallery will present a solo booth with Holmquist this December at UNTITLED Miami 2016. Holmquist will be participating in the exhibition *Eternal Youth* at the Museum of Contemporary Art, Chicago in March of 2017. He is an MFA graduate of the School of the Art Institute of Chicago.

ANNE LINDBERG

"I've come to understand my work as a kind of self-portraiture. Within the quiet reserve and formal abstraction is a strong impulse to speak from a deep place within myself about that is private, vulnerable, fragile, and perceptive to the human condition. My work is a mirror of how I experience the world, and as I negotiate physicality, optics and ideas through drawing languages, my voice withholds, blurs, teases and veils." – 2015

Lindberg (b. 1962, United States) lives and works in New York. In 2015 she presented a solo exhibition at *The Mattress Factory*, Pittsburgh. Later this month she will be in a group exhibition at the Akron Art Museum. Her site-specific work is on view in *Landscape abstracted* at the Museum of Fine Arts Boston through 2017. Recent exhibitions include Contemporary Arts Center Cincinnati, OH; Atlanta Contemporary Art Center, GA; US Embassy, Rangoon, Burma; Bemis Center for Contemporary Arts, Omaha, NE; Nerman Museum of Contemporary Art, Overland Park, KS; and Bom Retiro Cultural Center, Sao Paulo, Brazil. Accolades include a Joan Mitchell Foundation Grant (2011) and the Art Omi International Artists Residency (2009); Lindberg's work may be found in public and private collections worldwide.