

LILIANA PORTER  
**MEMORABILIA**

September 15 –  
November 3, 2018

**Liliana Porter**  
***Memorabilia***

September 15 – November 3, 2018

Carrie Secrist Gallery is pleased to announce ***Memorabilia***, an exhibition by gallery artist Liliana Porter opening Saturday, September 15 and on view through November 3, 2018.

Born in Argentina in 1941, Porter is a member of a pioneering wave of Latinx artists who have mined identity socio-politics using then-new strands of contemporary art making to forge engaging methods of aesthetic engagement. Currently being recognized for her contribution to art history, Porter has recently been highlighted in notable exhibitions including: a career spanning survey at the Museo Tamayo de Arte Contemporáneo (2009), inclusion in the 57th Venice Biennale (2017) and *Radical Women: Latin American Art, 1960–1985* (2018).

Liliana Porter's ***Memorabilia*** presents highlights from a celebrated and dedicated artistic career of giving voice to the Everyperson. Through the use of found inanimate objects, Porter posits the human condition as fragile and curious, yet full of wonder. Activated by the viewer, these characters are cast in vignettes that theatricalize the trials and tribulations of society depicted through an almost incomprehensible range of human emotion. Presented in a variety of mediums including painting, photography, drawing, installation assemblage, collage and video, these oft forgotten - but most likely once adored - ceramic ducks, plastic soldiers, porcelain figurines and the like, are reanimated with a new purpose.

The artworks on view in ***Memorabilia*** make apparent deeper contexts at play, using time and memory as a worldview primed to expose our current societal quandaries. The myriad of narratives that emerge with Porter's work are initially personal, playing off of nostalgia and mnemonics - but are also dosed with subtle humor and a hint of foreboding. Cumulatively, the relatable perspectives gained from this experience allow the viewer to comprehend what Porter calls "the possibility of meaning" while emphasizing our own infinitesimal role in the grandest scheme of all.



Liliana Porter | MEMORABILIA. Installation view. Carrie Secrist Gallery, September – November, 2018



Liliana Porter | MEMORABILIA. Installation view. Carrie Secrist Gallery, September – November, 2018



Liliana Porter | MEMORABILIA. Installation view. Carrie Secrist Gallery, September – November, 2018



Liliana Porter  
*Red Sand*  
2018  
Colored sand and figurine on white wooden base  
36 x 36 x 40 inches  
LP-000116



Liliana Porter  
*Untitled with Travelers*  
2011  
Acrylic and assemblage on canvas  
48 x 60 inches  
LP-000133

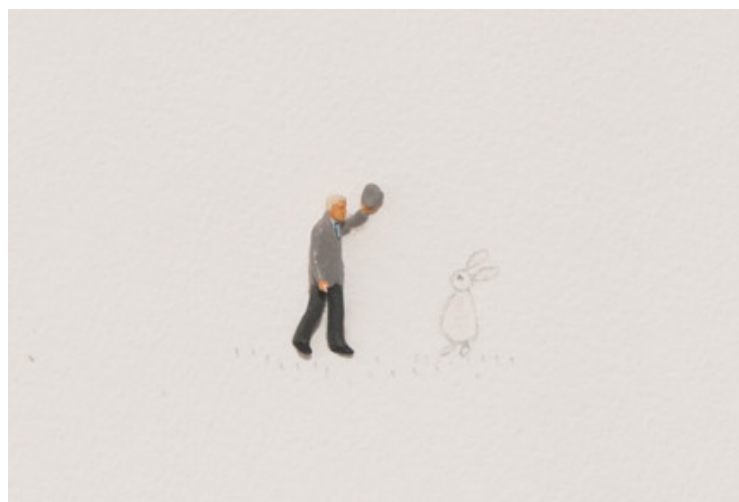


Liliana Porter  
*Untitled with Travelers (details)*  
2011  
Acrylic and assemblage on canvas  
48 x 60 inches  
LP-000133





Liliana Porter  
*The Task*  
2011  
Acrylic paint and figurine on canvas  
5 inch diameter  
LP-000122



Liliana Porter  
*To Say Hallo + detail*  
2008  
Graphite and metal figurine on paper  
15 x 12 inches, 19 x 14.5 inches, framed  
LP-000135



Liliana Porter  
*The Other Mirror + detail*  
2014  
Collage on paper  
20.25 x 16.25 inches, 25 x 21.25 inches, framed  
LP-000121



Liliana Porter

*To Repair It*

2018

Metal clock, figurine, and white wooden shelf

3 x 8 x 4 inches

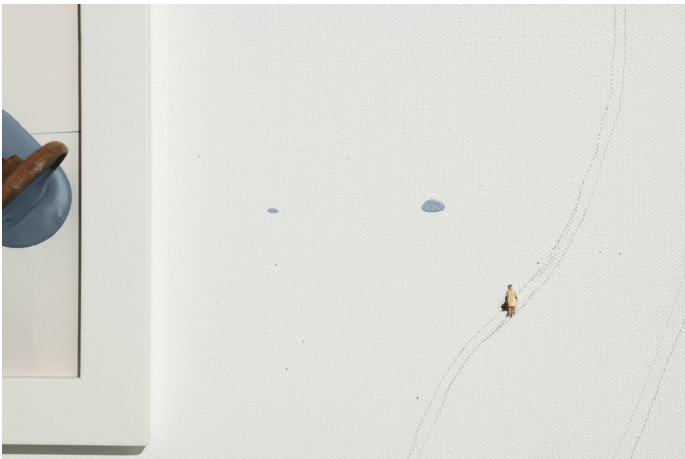
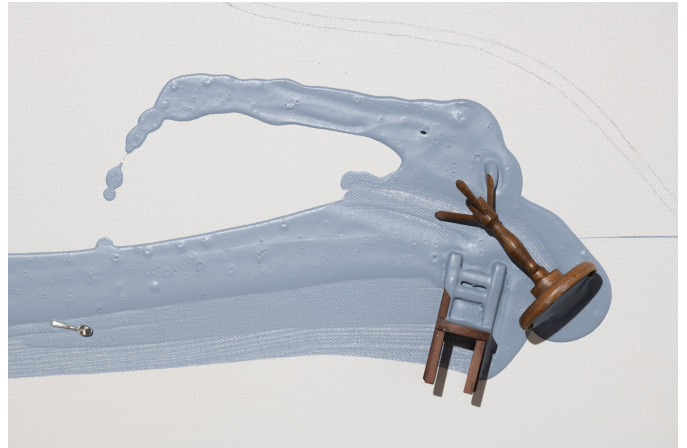
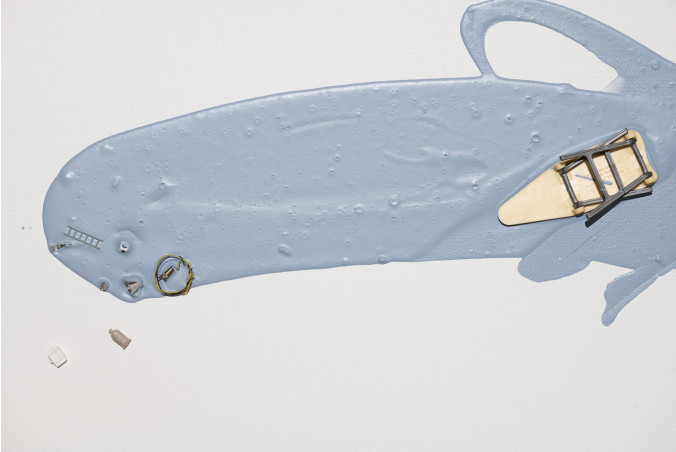
LP-000129



Liliana Porter  
*To Get There* + detail  
2018  
Acrylic and assemblage on canvas  
16 inch diameter x 2 inches  
LP-000128



Liliana Porter  
*Untitled with Ironing Board*  
2018  
Acrylic and assemblage on canvas  
36 x 125 x 3.5 inches  
LP-000131



Liliana Porter  
*Untitled with Ironing Board (details)*  
2018  
Acrylic and assemblage on canvas  
36 x 125 x 3.5 inches  
LP-000131



Liliana Porter  
*Correccion (a)*  
2007  
Pencil on paper  
15 x 12 inches, 19 x 14.5 inches, framed  
LP-000112





Liliana Porter  
*Situation with Memling's Portrait of a Man*  
2012  
Toy lamb and postcard on shelf  
9 x 16.5 x 8 inches  
LP-00017



Liliana Porter

*Memorabilia*

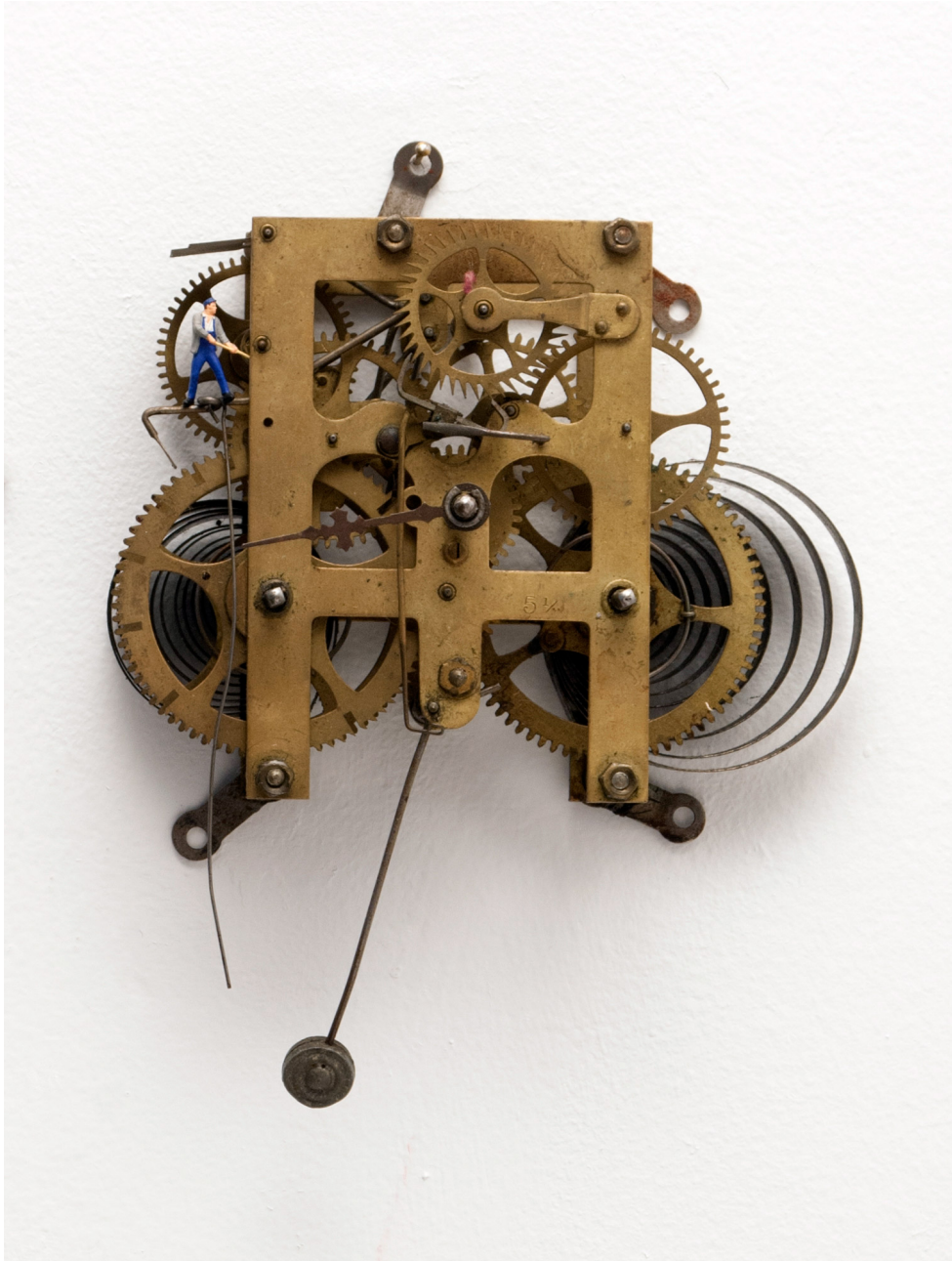
2016

Fuji-flex c-print

26.75 x 40 inches, 27.75 x 41 inches, framed

Edition 4-5/5 + 2AP

LP-000115



Liliana Porter  
*To Fix It (Wall Clock III)*  
2018  
Metal and figurine  
7.75 x 5.5 x 2.5 inches  
LP000127



Liliana Porter

*Untitled with Black Drips II*

2016

Acrylic, pencil, and figurine on paper

8.25 x 6.25 inches, 11.5 x 9.5 inches, framed

LP-000111



Liliana Porter  
*To Rest from It*  
2016

Acrylic, pencil, and figurine on paper  
8.25 x 6.25 inches, 11.5 x 9.5 inches, framed  
LP-000130



Liliana Porter

*To Do It (man in green apron)*

2016

Acrylic, pencil, and figurine on paper

8.25 x 6.25 inches, 11.5 x 9.5 inches, framed

LP-000124



Liliana Porter  
*Girl with Blue Sand*  
2016  
Fuji-flex c-print  
24 x 36 inches, 25 x 37 inches, framed  
Edition 3-5/5 + 2AP  
LP-000114



Liliana Porter

*Actualidades / Breaking News*

2016

Digital Video

22 minutes

Edition of 8 and 2 APs

Conceived & directed by Liliana Porter

Music: Sylvia Meyer; Co-direction: Ana Tiscornia; Videography and Editing: Federico Lo Bianco

LP-000109





Liliana Porter  
*Forced Labor (Seamstress)* + detail  
2012  
Shelf with figurine and fabric  
10 x 43 x 10.25 inches  
#2608



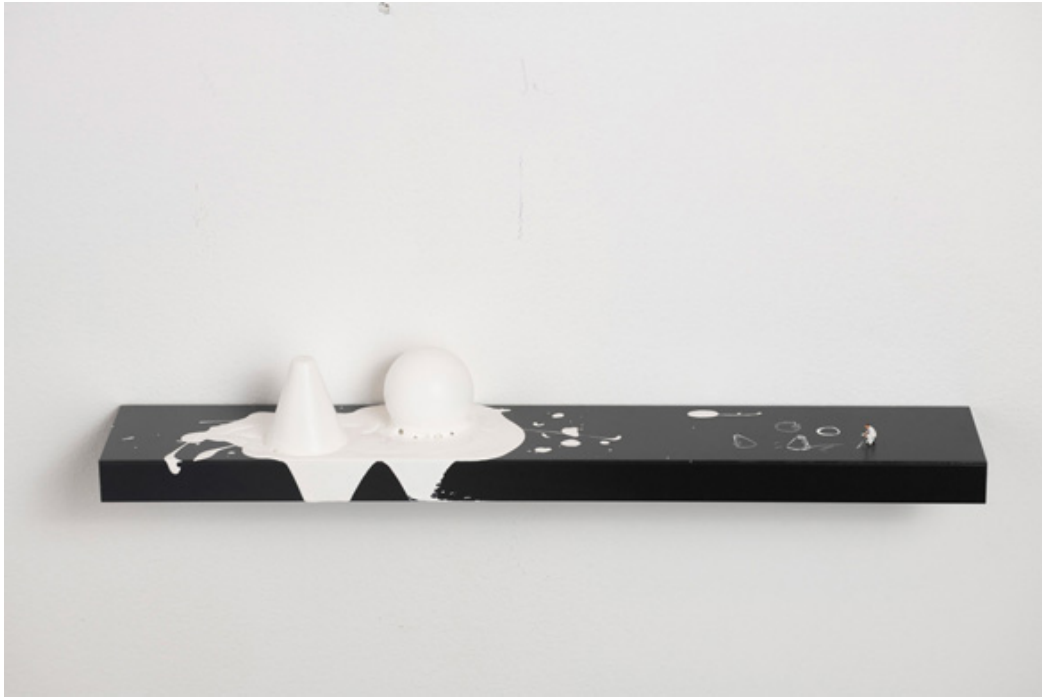
Liliana Porter  
*The Gardner* + detail  
2018  
Bronze figurine and porcelain on shelf  
5 x 43.25 x 10.25 inches  
LP-000119



Liliana Porter  
*At Sea*  
2016  
Fuji-flex c-print  
30 x 22 inches, 31 x 23 inches, framed  
Edition 2-5/5 +2AP  
LP-000110



Liliana Porter  
*To Draw It + detail*  
2018  
Acrylic paint, geometric shapes, and figurine on white shelf  
5 x 21.5 x 3.75 inches  
LP-000132



Liliana Porter  
*The Artist + detail*  
2018  
Acrylic paint, geometric shapes, and figurine on black shelf  
4.5 x 21.5 x 3.75 inches  
LP-000118

**ARTIST BIOGRAPHY**

**Liliana Porter** (b. Argentina, 1941, resides in New York since 1964) works across mediums with printmaking, painting, drawing, photography, video, installation, theater, and public art. Porter began showing her work in 1959 and has since been in over 450 exhibitions in 40 countries. Current shows include a solo exhibition at El Museo del Barrio. Recent solo shows include those at The Perez Art Museum in Miami; Galería Luciana Brito in São Paulo, Brasil; ART OMI in Ghent, NY; Savannah College of Art and Design in Savannah, GA; El Museo Nacional de Artes Visuales in Montevideo; Museo Provincial de Bellas Artes Franklin Rawson in San Juan, Argentina; and Museo de Arte de Zapopan in Guadalajara, Mexico. Her work is featured in the traveling exhibition *Radical Women: Latin American Art, 1960 – 1985* at the Brooklyn Museum, NY and the Hammer in Los Angeles, CA. In 2017 Porter's work was included in *Viva Arte Viva*, La Biennale di Venezia, 57th International Art Exhibition in Italy and she debuted *Domar al leon y otras dudas*, her third theatrical production in June at the 2nd Bienal de Performance, Parque de la Memoria in Buenos Aires, Argentina.

Additionally Porter's work has been exhibited at El Museo Tamayo, México DF; the Blanton Museum of Art, Austin, TX; Museo Nacional Centro de Arte Reina Sofía, Madrid, Spain; Museo de Arte Latinoamericano, Buenos Aires, Argentina; and in New York at the Museum of Modern Art, the Whitney Museum of American Art, and the New Museum. The artist's works are held in public and private collections, among them are TATE Modern, London; Museo Nacional de Bellas Artes Buenos Aires; The Museum of Fine Arts, Boston; Philadelphia Museum of Art; Museo de Bellas Artes de Santiago; Metropolitan Museum of Art, NY; Guggenheim Museum of Art, NY; Smithsonian American Art Museum, Washington, DC; Fogg Art Museum at Harvard University, Boston; Museo de Arte Moderno de Bogota, Museum of Fine Art, Houston; Museum of Modern Art, NY; Whitney Museum of American Art, NY; and the Daros Latinamerica Collection Zürich. Public art projects include those for NY's MTA and Doménech Station in San Juan, Puerto Rico. Galleries in Europe, Latin America, and the United States represent the artist.

Carrie Secrist Gallery  
835 West Washington BLVD  
CHICAGO, IL 60618  
+1 312.491.0917

[secristgallery.com](http://secristgallery.com)

**All work copyright the artist and Carrie Secrist Gallery, © 2018.** This document and any additionally attached files are intended solely for the individual or entity to which this mail is addressed and may contain information that is privileged, confidential and exempt from disclosure under applicable law. Any use, disclosure, copying or distribution of this document or the attached files by anyone other than the intended recipient is strictly prohibited.

Pricing and availability of works of art listed in this document and any additionally attached files are subject to change without prior notice.